





Psychology



The study of human behaviour and the application of psychology is one of the fastest growing careers in the developing world today. It has applications in medicine, education, business, social policy and technology. As societies advance, intelligent lifestyles require greater control over emotional, behavioural and mental abilities. An undergraduate degree in Psychology is the first step towards personal and career advancement.

In offering this programme, Sunway University strives to produce graduates who have a thorough understanding of the principles of human behaviour and are able to apply these principles in dealing with real-life issues and enhancing human potentials.

Sunway University is an elite Tier 5 member in the 2009 MQA Rating System for Malaysian Higher Education Institutions (SETARA'09) that measures quality of teaching and learning at the undergraduate level in universities and university colleges in Malaysia. It is another way of recognising our excellent academics and graduates.

Critical Thinking • Communication • Independent Research Ability Skills • Leadership

Why Study Psychology at Sunway University?

We want you to be more than just a well-versed talking head on psychology, we make sure you acquire skills that truly enable you to connect and communicate.

- A psychology graduate of Sunway will develop skills in:
 - Administering basic psychological tests
 - Running basic group programmes
 - Understanding the principles of child behaviour control
 - Designing and carrying out investigations to understand problems
 - Analysing and interpreting data
 - Being able to develop structured lesson plans and instruct a group
 - Being able to critically examine ethical problems from various philosophical orientations
- Our students learn practical skills in community, health and corporate settings through:
 - Community and clinical work where students get hands-on experience working with children and families
 - Internships
 - Local and international research collaborations
- At Sunway, psychology students are trained using the most professional facilities for practical learning. A specialised psychology laboratory is used to teach science-based psychology subjects along with:
 - Computing facilities with statistical software, psychological experiments and simulations
 - Observation rooms to conduct child development assessments, interviewing techniques and small group work
 - Unlimited access to Online Electronic Psychology Journal Databases



Our Dynamic Team

DR. LIN MEI-HUA

B.Sc. in Psychology
University of Iowa (USA)

M.S. & PhD in Industrial & Organisational
Psychology/Human Factors Psychology
Wright State University (USA)

MS. ELAINE YONG

B.A. in Psychology (Hons)
Universiti Kebangsaan Malaysia

M.Sc. Sc. in Human Development
Universiti Kebangsaan Malaysia

DR. ALIA AZALEA

B.A. in Psychology
University of Kentucky (USA)

M.A. in Industrial/Organisational Psychology
Xavier University (USA)

PhD in Industrial/Organisational Psychology
Universiti Kebangsaan Malaysia

MS. CHEE KWAN FOONG

B.A. (Hons) in Psychology
Universiti Kebangsaan Malaysia

M.A. in Counselling Psychology
Universiti Kebangsaan Malaysia

Registered counsellor: PA00441

Head of Department

Industrial/Organisational Psychologist

Research Interests

- Cross-cultural differences in cognition
- Decision-making & sense-making
- Organisational issues

Coordinator of Programme

Developmental Psychologist

Research Interests

- Learning and teaching strategies in kindergartens
- Infant memory
- Infant's language development
- Children's social skills & learning
- Family meal times and adolescents development
- Children and animals

Industrial/Organisational Psychologist

Research Interests

- Personality
- Organisational issues
- Cross-cultural issues

Counselling Psychologist

Research Interests

- Grief and Bereavement
- Depression and suicide
- Counselling room environment and treatment outcome
- Mental health of teachers & terminally ill patients
- Counselling intervention and treatment outcome

“ Like all science, psychology is knowledge; and like science again, it is knowledge of a definite thing, the mind. ”

James M. Baldwin

MS. GRACE YAP

B. A. in Psychology
University of Central Oklahoma (USA)
M. Ed. in Gerontology
University of Central Oklahoma (USA)
Post-graduate Diploma in Systemic Therapy
Northwest Satir Institute (Canada)

MS. JACQUELINE GUN

B.Sc. in Psychology
Bemidji State University (USA)
Masters in Counselling
HELP University (Malaysia)

MS. MICHELLE LEE

B.S. (Hons) in Psychology
Upper Iowa University
M.S. in Occupational Health and Safety Leadership
University of Nottingham
(Institute of World Health Organisation)

DR. SAKINEH MOFRAD

B.Sc. in Clinical Psychology
Shiraz University (Iran)
M.Sc. in Clinical Psychology
Tehran Psychiatry Institute, Iran University (Iran)
PhD in Psychology of Child Development
Universiti Putra Malaysia

MS. WOO PEI JUN

B. A. in Psychology
Ohio State University (USA)
M. A. in Psychology
Boston University (USA)

Counselling Psychologist

Research Interests

- Young adults and personalities
- Marital issues
- Aging and elderly care
- Psychological factors in chronic patients

Counselling Psychologist

Research interests

- Sexuality
- Family Planning/ Contraception
- Teenage issues

Organisational Psychologist

Research interests

- Work-family conflict
- Leadership
- Organisational culture

Child Developmental Psychologist/Clinical Psychologist

Research Interests

- Parenting
- Mental Health
- Child Social Emotional Development
- Child Behaviour problem

Developmental Psychologist

Research Interests

- Infant face and language perception
- Behavioural and emotional problems in children
- Bullying and victimisation amongst school children
- Parenting issues
- Cross cultural issues in eating disorder
- Work-family balance

International Connection: University Partner

Success is a culmination of teamwork and strong partnerships. We have long been in alliance with some of the most accomplished institutions of higher learning to ensure that our students get the best in education.



photographed by Jill Jennings

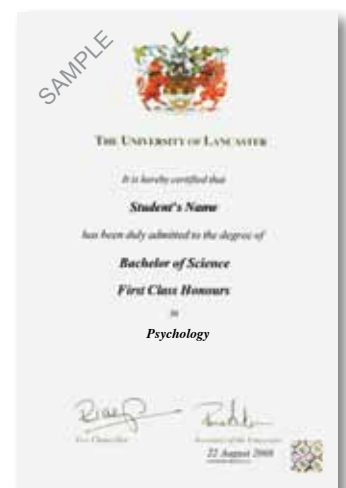
Lancaster University

Sunway University is in partnership with Lancaster University, UK, a world-class institution of higher learning which has consistently maintained its high rankings over the years in numerous reputable league tables.

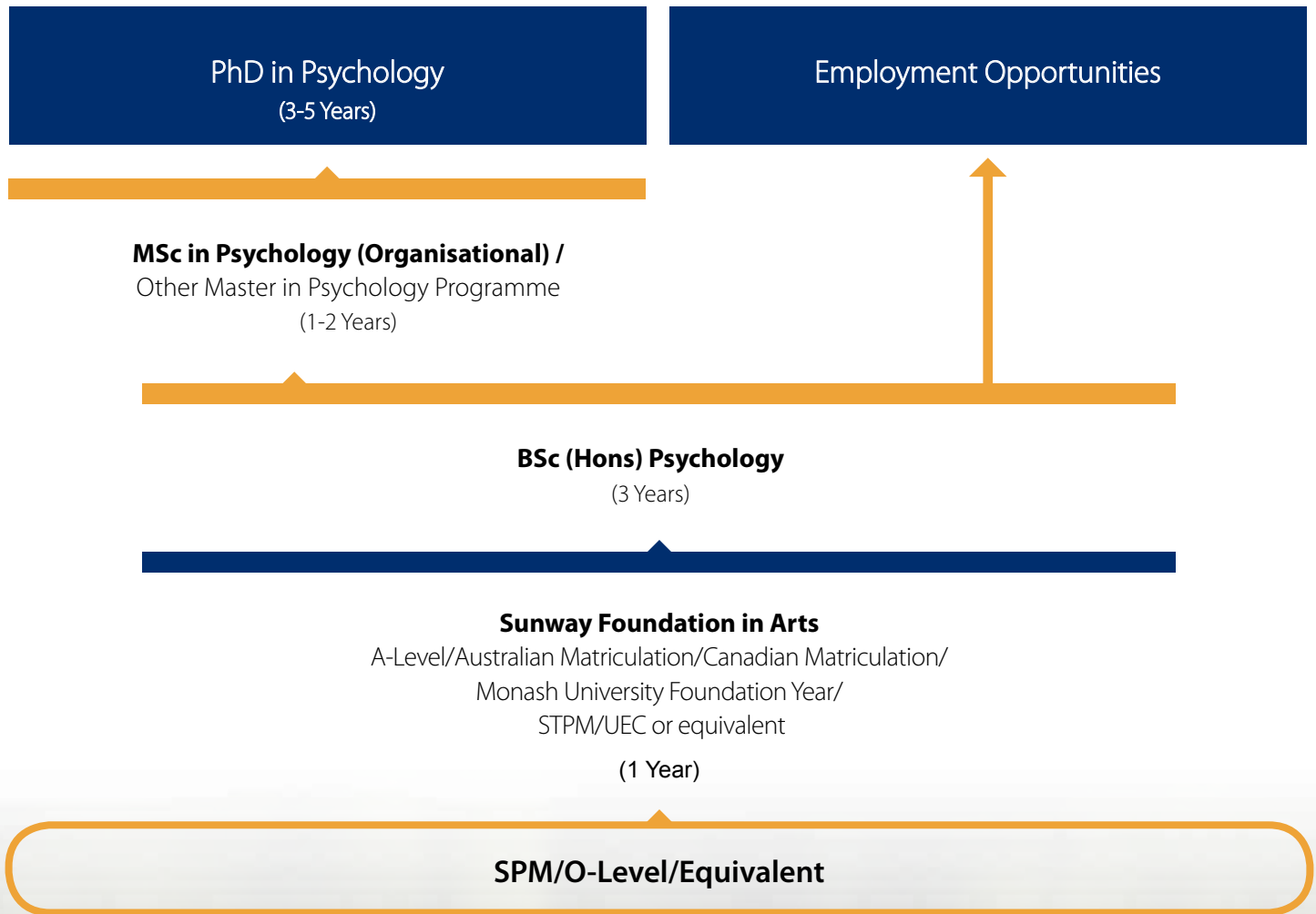
Established by Royal Charter in 1964, Lancaster University enjoys a world-class reputation as a centre for excellence in teaching, scholarship and research. The institution is currently ranked 9th out of over 100 universities in the UK in The Times Good University Guide 2012, 9th in the Independent's Complete University Guide 2012, 7th in the Guardian University Guide 2012, 124th in the Times Higher Education World University Rankings 2011, and 153 out of 300 Universities in QS World University Rankings 2011, making it within the top 1 per cent of the universities in the world.

Lancaster University is also a member of the prestigious N8 Group which consists of eight of the most research intensive universities in northern England. The institution continues to sustain its reputation for teaching and research excellence both nationally and internationally by bringing universities, businesses and communities together. An example of this is the InfoLab21 at Lancaster University, which is an award-winning international centre of excellence for research in information and communication technologies and has a successful history of working with Microsoft, BT Labs, Orange, Cisco, Nokia and Ford. Additionally, the Lancaster University Management School (LUMS) is a triple-accredited, world-ranked management school, consistently among the UK's top five.

The degree programmes developed and conducted at Sunway University are validated by Lancaster University, UK. Our students who successfully complete these undergraduate programmes will be awarded two certificates, making them graduates of both Sunway University and Lancaster University.



Education Pathway



Teaching & Assessments

Students are expected to spend time on lectures, tutorials, guided reading and report writing. They are guided through project work which emphasises problem definition, solution generation, statistical evaluation and programme development, preparing them to meet the demands of working life.



BSc (Hons) Psychology

This degree programme provides a strong theoretical foundation and subsequently, equips students with the basic skills in the science of human behaviour. Academic materials for the programme are based on scientific principles that are the results of decades of experimentation and study. Course subjects have been chosen based on their relevance to practising psychologists and with regards to requirements for psychology.

What is this programme about?

- The study of human behaviours.
- Doing research and analysing behaviour pattern.
- Understanding emotional, behavioural and mental abilities.

Find out if you're suitable for Psychology

- are a good listener
- enjoy observing and analysing people
- are patient and caring
- intrigued by the behaviours of people and animals
- are a people person
- like to devise and research to explore human behaviour and personalities
- want to develop a range of skills for a range of careers

Career Prospect

Students study both psychological and social science subjects so that they are trained in their **critical thinking, independent research ability, communication skills and relationship**. When they graduate, they are equipped with highly sought after skills that employers look out for especially in research and human relationships related jobs.

- Teaching Children with Special Needs
- Child Development
- Mental Health Aid in a Psychiatric Clinic
- Special Needs Resource
- Market Research
- Advertising
- Public Relations
- Statistical Research
- Human Resource
- Management Consulting

This programme is a prerequisite for those planning to pursue Psychology at the postgraduate level. Students may decide to pursue Master or Doctoral degrees in clinical, educational, organisational, developmental, sports or neurological psychology.

Programme Structure

Year 1

PSY 1014	Introductory Psychology
PSY 1024	Social Psychology
PSY 1034	Developmental Psychology
PSY 1044	Organisational Psychology
PSY 1054	Motivation & Emotion
STA 1014	Introduction to Statistics
RSM 1014	Research Methods
PSY 1064	Pet Behavioural Studies
PSY 1073	Community Mental Health
ENG 1034	English for Psychology

Year 2

PSY 2014	Psychology of Learning and Education
PSY 2024	Personality Psychology
PSY 2034	Theories of Counselling
PSY 2044	Abnormal Psychology
PSY 2054	Applied Developmental Psychology
PSY 2064	Brain & Behaviour
PSY 2074	Psychological Testing
PSY 2084	Cognition & Perception
PSY 2094	Cross-Cultural Psychology
ENG 2013	Communication Skills

Year 3

PSY 3014	Advanced Topics in Psychology
PSY 3024	Behaviour Modification
PSY 3034	Learning Disabilities
PSY 3044	History of Psychology
PSY 3054	Psychology Seminar
PRJ 3026	Research Project
INT 3026	Internship

As per Malaysian Qualifications Agency (MQA) requirements, all Malaysian students must pass a module each in Malaysian Studies, Moral Studies (non-Muslims)/Islamic Studies (Muslims) and Bahasa Kebangsaan (exempted if a credit in Bahasa Melayu has been obtained at SPM level).

Entry Requirements

Academic Requirements

STPM	Average B- (CGPA 2.67 minimum 2 principals or best 2 subjects)
A-Level	CDD/BC (14 points)
Australian Matriculation	ATAR 65
Canadian Matriculation	70%
MUFY	240
Sunway Foundation in Arts	65%
UEC	Maximum 22 points (5 subjects, excluding Chinese and non-academic subjects)
International Baccalaureate	26, based on 6 subjects

Conditional offers may also be awarded on a case-by-case basis to students who narrowly miss the full entry requirements.

Mathematics and Science Requirements

The BSc (Hons) Psychology requires prospective students to provide evidence of competency in Science and Mathematics subjects. These minimum requirements are:

- **SPM/O-Level/Pre-university:**
 - Credit in General Mathematics
 - Credit in any of the following subjects:
Biology, Chemistry, Physics or General Science
- **Chinese Independent Schools:**
 - B in Science & Mathematics (Junior Middle 3 Exams)

English Language Requirements

TOEFL	550 Paper-based (213 Computer-based; 80 Internet-based)
IELTS	6.0
MUET	Band 5
SPM	A1/A2 or A+/A/A-
UEC English	B3
O-Level English (1119)	B3
Sunway Intensive English Programme	Pass Level 4 with 65% minimum

Other English requirements will be considered on a case-by-case basis.

English Language Assistance

Sunway University welcomes students who want to work hard and try their best to become professional psychologists. For students who have met all the academic entry requirements but may still have some difficulties with English, additional classes and remedial help in the English language can be arranged through Sunway University's English Language Department.

Other Qualifications

Those who possess other international qualifications and are looking to transfer credits (i.e. diploma or degree) will be considered on a case-by-case basis.

Academic Calendar

INTAKES

March & August

DURATION

3 Years

ACADEMIC YEAR STRUCTURE

Two long semesters (14 weeks)

BREAKS

Several mid-semester and end-of-semester breaks each year

Students Who Made A Difference

“ We have a proud tradition of being the stepping stone to success. Many of our graduates have successfully moved on to further their studies at renowned universities or pursue rewarding careers of their choice. ”

Cross-cultural psychology inspires me. I learned about people's attitudes, values and behaviours, and how they are shaped by culture. That is why psychologists need to develop cultural sensitivity.

INDRI GITTA EDRIA
Graduate of Sunway
BSc (Hons) Psychology

Classes are interesting as lecturers impart knowledge that inspires us. Abnormal Psychology gave me the chance to have a better understanding of mental disorders and helped to correct stigma and prejudices.

CHAN KA WENG
Graduate of Sunway
BSc (Hons) Psychology
Teaching Assistant
Department of Psychology
Sunway University

I apply skills and abilities I learned as a psychology student to my current job. I utilise methods from my programme to encourage employees and use personality assessments for recruitment and employee development.

CHEAH RENN ZHERN
Graduate of Sunway
BSc (Hons) Psychology
Human Capital Development
Executive, Sunway City Berhad



I learned various psychological assessments which are appropriate for different clinical cases and behavioural techniques to manage children's behaviours. I gained first-hand experience in conducting infant experiments along with administering developmental assessments on infants.

HO LI QUIN

Graduate of Sunway
BSc (Hons) Psychology
Leadership Knowledge Centre
South East Asia
Consultant, Aon Hewitt

Understanding the underlying processes which intertwine in our everyday lives like Motivation and Emotion, has allowed me to have much input in the way I can regulate and aid in maximising my behaviours and potential.

**SYED ABDUL QADER BIN SYED
ABDUL RAHMAN ALSAGOFF**

3rd year student of Sunway
BSc (Hons) Psychology

What I love most in psychology is Pet Behavioural Studies as it not only taught me to love animals but gave me a better understanding of why they act in a particular manner. I want to devote myself to my passion which is protecting animals.

**SARAH AHMED SAEED
AHMED MADHI**

3rd year student of Sunway
BSc (Hons) Psychology



Contributing to Society



At Sunway University, staff and students are encouraged to get involved in a variety of community projects.

They do this either via providing community information, research or through skills training workshops. The following are some of the projects that staff and students have been involved in:

National Institute for Youth Development Research

The National Institute for Youth Development Research was set up by the Minister of Youth and Sports to provide professional advice on youth issues. Ms Woo Pei Jun have been involved in the development of research projects on youth which has contributed towards policy for Youth Development in Malaysia. Current projects include projects that involve youth mental health, lifestyle and attitudes. The collaboration with many government think-tanks and ministries has made development of the projects possible.

Parenting at Work, Ministry of Women, Family & Community Development

The Ministry of Women, Family & Community Development has recently launched the Parenting at Work programme aiming to assist working parents with skills to manage a healthy lifestyle at work and at home. Ms Woo Pei Jun played an active role in the development of the training modules and together with Ms Elaine Yong, assisted in running some of these training programmes for ministry staff and the participant activity modules.

Emmanuel Care Centre

The Emmanuel Care Centre was set up to assist children with learning and developmental disabilities. Ms Woo Pei Jun has assisted with services in the centre through providing expert advice in diagnosis and rehabilitation for children. Some of our students have also had their internship placement at the centre.

National Autism Society of Malaysia

The National Autism Society of Malaysia is concerned with the services that are being provided for autistic children. These services include assessments and diagnosis, training in self-care skills, motor skills, speech and early intellectual development. Ms Woo Pei Jun assists in the society through her involvement as a consultant to the National Advisory Council.

Amway One-By-One Campaign for Children

The Amway One-By-One Campaign for children was set up in Malaysia to promote positive mental health amongst Malaysian children. The campaign includes parenting workshops, social skills training for children, parent-child interaction camps, and a series of mental health education articles in the English, Malay and Chinese newspapers. The staff and students of the Department of Psychology have been regularly involved in running this programme, with the support of Amway Malaysia.



IT Shared Services

Dr. Lin Mei-Hua and colleague conducted a survey to analyse the reasons for effective performance among employees, especially in terms of increasing motivation and lowering the turnover intentions. The survey was carried out with a sample of 60 employees on various organisational concepts and employees' reaction and well-being. Concepts which affect turnover intentions, work motivation and job satisfaction were identified and a detailed report was prepared and presented to the Director of the organisation.

Wellness Project

Dr. Lin Mei-Hua and colleague were involved in a wellness intervention programme for employees of a hospitality organisation. The client is concerned by the high medical claims and increased level of job turnover among their employees, therefore, as consultants, Dr. Lin and colleague conducted a careful, thorough observation of the work setting and conducted focus groups. To follow is a survey to be administered to all employees. Based on the survey results, a suitable intervention programme will be recommended.

Diversity Awareness Programme

Dr. Alia Azalea and colleague conducted a Diversity Awareness Programme for a major pharmaceutical organisation. An assessment and training was conducted to address the issue of stereotyping and unconscious biasness among the employees of the organisation. Such programme will help the organisation to understand the possible process of their hiring decisions.

ParentThots

Ms. Woo Pei Jun is serving in the panel of experts for this online Star Publications to answer questions about community health problems, particularly on issues related to child and parenting issues.

Minute Psychology

Ms. Grace Yap is the founder and contributor for this virtual magazine that discusses current research in Psychology and issues related to Psychology, such as women's issues, self-help and family issues.

United Daily News

Ms. Grace Yap is a contributor for this East Malaysian Mandarin newspaper. Her articles revolve around current events related to Psychology, such as suicide, grieving process, and Post-traumatic stress disorder.

Pitter Patter

Ms. Elaine Yong is a contributor for this online column that discusses issues related to parenting.

Scholarships: Providing Educational Opportunities

We place much emphasis on education and offer a number of scholarships to deserving students:

The Entrance Scholarship is offered to all new students; SPM leavers entering into Pre-University programmes and Pre-University graduates entering into undergraduate programmes, in recognition of their excellent academic achievements prior to admission into a new programme in Sunway University.

The Continuing Scholarship is only offered to students continuing their studies (at diploma or undergraduate level) with Sunway University upon graduating from their Pre-University/ Foundation/Diploma Programmes here with us or from Sunway Group of Colleges.

This is a nominated award for students who have achieved outstanding results in their individual academic programme upon completion at Sunway University. Each award recipient will receive a RM2000 cash prize and a Scholastic Award Certificate.

Tan Sri Dato' Seri Dr. Jeffrey Cheah Scholastic Award

Tan Sri Dato' Seri Dr. Jeffrey Cheah Entrance Scholarship & Continuing Scholarship

The Chancellors Scholarship of Sunway University and Lancaster University

The Scholarship is offered in the name of Tan Sri Dato' Seri Dr. Jeffrey Cheah, Foundation Chancellor of Sunway University, and Sir Christian Bonington, Chancellor of Lancaster University. It commemorates the affiliation between Sunway University and Lancaster University in Joint Degree Programmes in Business, Communication, Computer Technology and Psychology. Applicants are required to achieve outstanding academic results for entry into the BSc (Hons) Psychology and possess leadership qualities, self-motivation and positive attitude.

Scholarship rewards students with:

- **100% waiver of Tuition Fees (excluding general fees)**
- **Two-Week Study Visit to Lancaster University** during their final/third year of studies

Financial Aid

Students can also seek other financial aid from PTPTN or EPF.

PTPTN

Students can apply for PTPTN loan or Scholarships based on their results. For more information, kindly visit www.ptptn.gov.my

EPF

Parents can withdraw funds from their EPF Account to help finance a degree education of their choice. For more information, kindly visit www.kwsp.gov.my

Career Placement & Alumni Networking

PRePARE, the core of Sunway Career Services, is designed to equip students with the right tools and essential skills, aiming to create employable graduates so as to prepare them for the working world.

Through our programmes and activities, we aim to foster good partnerships with employers in supporting their recruitment needs.



Students

PRePARE is dedicated to accomplishing its 3 main objectives on campus:

- **eQUIP** students with essential work skills
- **eNHANCE** students' career development in the working world
- **eMPOWER** students to be confident in building their career

Employers

- **PRePARE** seeks to foster partnerships with esteemed employers in their recruiting endeavours by creating various opportunities for recruitment activities through events such as career fairs and career talks.
- Through our activities, we hope to expose students to different careers, and at the same time give employers access to the graduate market.



- **PRePARE** supports the Sunway Alumni by providing an avenue for members to build their careers.
- **PRePARE** makes available various resources and opportunities for members to further establish their careers and even network with the employers. Alumni members also have access to **PRePARE** Job Centre where they can seek employment opportunities.

Alumni

The Campus Experience

The **Main Campus building** is fitted with 24-hour wireless internet (Wi-Fi) access, air-conditioned classrooms and lecture halls, and the Tun Hussein Onn Library (THOL) - an excellent resource of books and periodicals on psychology.



Specialised research facilities include psychology laboratories and observation rooms for students to learn about developmental and cognitive tests, interviewing techniques, personality tests, experimental research and career assessment.



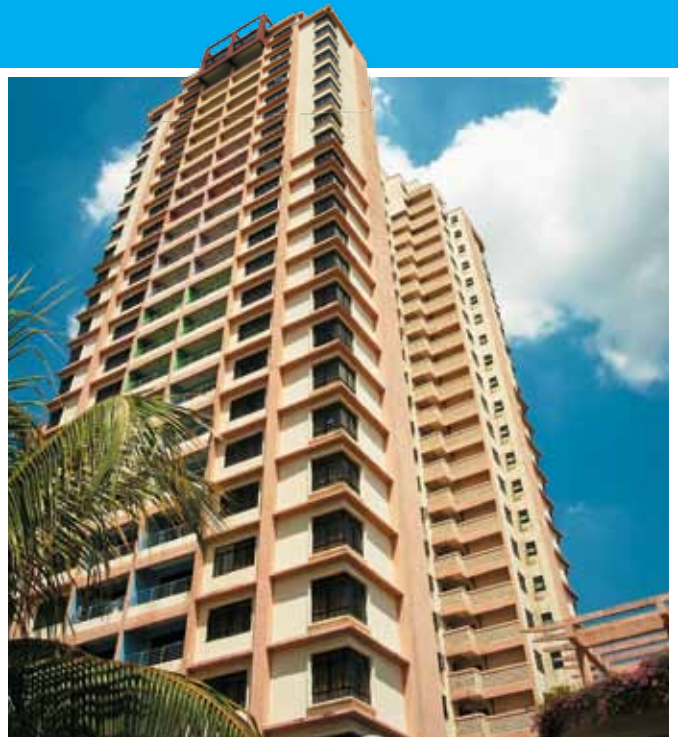
Other amenities include bookshop; computer labs to print, scan or photocopy assignments; recreational and sporting facilities; and a **Student Centre** - a cosy place with a sick bay, counselling services, travel bureau and more.

A campus bus service of several different routes within the Klang Valley is also available.

Campus Accommodation

It's easy to get to classes, a great way to meet new friends and an opportunity to experience living independently. Everything - hospital, shopping mall, restaurants, banks - is within walking distance from campus.

Choose between the communal living of Sun-U Apartment, or the condominium lifestyle of Sun-U Residence and the brand new Sunway Monash Residence (SMR). A caring hostel master is on hand to oversee the welfare of every occupant.



Safety and Security

Our committed security team is made up of Auxiliary Police and trained professionals who work around the clock to ensure that every day is a smooth and peaceful one.

Taking A Break

Eat and chill out at the spacious on-campus cafeteria, nearby off-campus restaurants and food centre, or the endless variety that is the Pyramid mall - only a Canopy Walk away. There is something for everyone at a student-friendly budget.



Out of the Box

Our Psychology degree nurtures students through traditional means complemented with learning outside the classrooms. Participation in student activities such as: our very own Psychology Club, field trips and educational workshops, moulds them into effective leaders and communicators.



Mid-Autumn merrymaking

Promoting friendships and strengthening the ties that bind the Psychology family through exciting gatherings and outings.



Return of the Retro

Students learn through hands-on learning and psychology experiments in specialised labs.





Academic Symposium 2010:
The Influence of
Sociocultural Pressures on
Thought Processes



Field trip: Mental institution

Specialised workshops as a platform
to learn and exchange ideas with
peers and professionals.



Annual dinners



Theme Day: NERDS

Lecturers and students enjoy a close-knit bond with
the quirky Theme Days and many other social events.

SUNWAY Integrated City Campus

ENERGISED BY OUR LOCATION IN THE HEART OF BANDAR SUNWAY, STUDENTS AT SUNWAY UNIVERSITY AND SUNWAY COLLEGE ENJOY BOTH THE RESOURCES ON CAMPUS AND THE EASY ACCESS TO EVERYDAY CONVENIENCES, STIMULATING CULTURAL EXPERIENCES AND ENRICHING INTERNSHIP POSSIBILITIES.

Our Sunway Integrated City Campus (SICC) spans an impressive 7 - million square feet and is home to world-class retail, hospitality, leisure and healthcare amenities, and residential properties. It offers the advantages of a safe university town lifestyle with high-technology surveillance cameras and hundreds of auxiliary police and security guards. Everything is within walking distance connected by pedestrian-friendly tracks, allowing students to fully immerse in an all-encompassing campus township lifestyle.

Developed by Sunway Berhad, SICC is a thriving fully-integrated township in proximity to the bustling Subang Jaya town and is connected to Kuala Lumpur city by an efficient network of public transportation.



Sunway College
Sunway International School



SUNWAY Lagoon

APART FROM BEING AN AWARD-WINNING THEME PARK, SUNWAY LAGOON REGULARLY PLAYS HOST TO INTERNATIONAL PERFORMANCES MAKING IT A VIBRANT ARTISTIC HUB WHERE STUDENTS CAN INDULGE IN HIGH QUALITY WEST END PRODUCTIONS LIKE MAGICAL MUSICALS AND PETER PAN.

Students of various fields also get to experience enriching internship opportunities within the theme park.

SUNWAY Medical Centre

AN ACCREDITED PRIVATE HOSPITAL DEDICATED TO SPECIALISED HEALTHCARE SERVICES SITUATED NEAR THE ON-CAMPUS CONDOMINIUM.

Our students will be given the best of medical attention. The medical centre also serves as a training ground for our students with opportunities to work with some of the best healthcare professionals in the country.

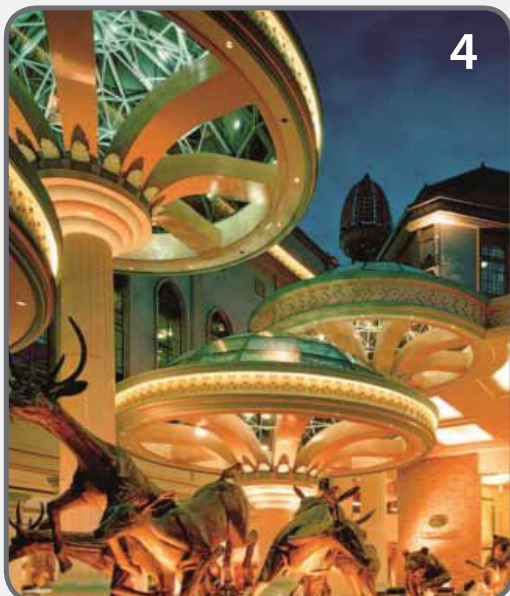
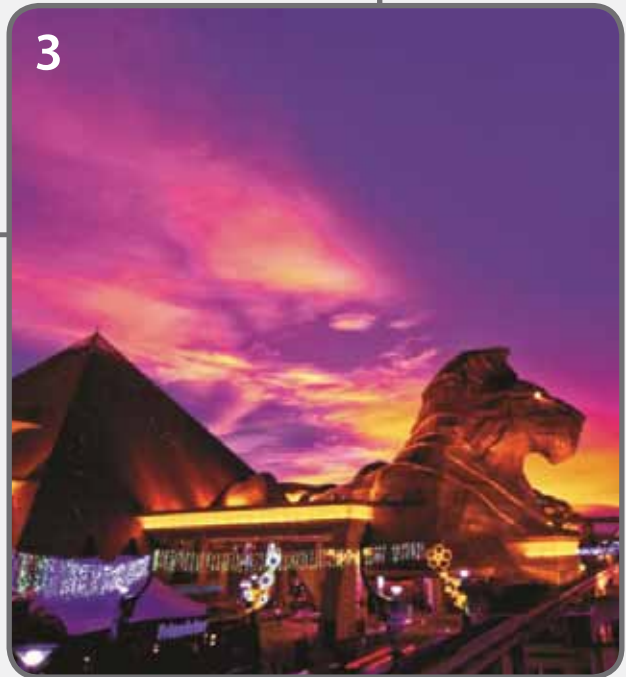


SUNWAY Pyramid Shopping Mall

ALL THE CONVENIENCES OF URBAN LIVING UNDER ONE ROOF: PLACES TO SHOP, HANG OUT AND EAT, COMPLETE WITH BANKS AND POST OFFICE.

Less than 5 minutes walk between campus and mall via the shaded Canopy Walk, Sunway Pyramid is also a contemporary cultural centre with plenty of exhibition space and activity areas where our students can appreciate an open art gallery and showroom ambience.

3



SUNWAY Resort Hotel & Spa and SUNWAY Pyramid Tower Hotel

CONNECTED TO SUNWAY PYRAMID, THESE TRENDY HOTELS ARE CONVENIENT PLACES FOR VISITING FAMILIES AND FRIENDS TO STAY.

The renowned hotels are also the ideal places for students to experience their industrial training in all areas - from the hospitality to the kitchen division, from technical support to the business and human resources divisions.

Investing in The Future



12-storey New Academic Block

with 2 Basement Levels and a Mezzanine Floor as well as a 2-level Basement Car Park

The 12-storey academic block will house the interdisciplinary undergraduate and new graduate programmes. The academic block of more than 550,000 sq. ft. will accommodate at least another 9,000 student population. The 2-level basement car park below the football field will consist of about 1,000 parking bays available to both staff and students.

Adhering to the government's call for more environmentally friendly buildings, this academic block is vying for the Green Mark Singapore and Green Building Index (GBI) Certification. The environmentally friendly design and concept in construction incorporates energy and water efficiency, and innovation for good natural lighting and ventilation systems.

The Graduate Centre

The institution's striving motto is to be the "Harvard of the East" and it aims to provide world-class learning experiences. The construction of the Graduate Centre on campus will be the focal point for Sunway Alumni to house their conferences and programmes. This centre will consist of a 130-seat lecture theatre and two 80-seat semicircle auditoriums with some break out rooms for discussion purposes. It will also be equipped with up-to-date facilities and sound systems.

Auditorium

A 5,000-seat grand auditorium will be equipped with the most modern and state-of-the-art facilities and AVA system. This auditorium will be one of the most outstanding in Malaysia to house graduation ceremonies and world-class events like the Cats musical, Il Divo and grand opera performances as well as symposiums.

The Multi-Purpose Sports Complex

A Multi-Purpose Sports Complex will be built adjoining to the Auditorium. This Sports Complex will be used for both indoor sporting activities and Sunway examinations and events appropriately. The Sports Complex will have a seating capacity of 1,000 people.





sunway.edu.my/university

SUNWAY UNIVERSITY (KPT/JPT/DFT/US/B15)
Owned and governed by Jeffrey Cheah Foundation (800946-T)

No. 5, Jalan Universiti, Bandar Sunway,
46150 Petaling Jaya, Selangor, Malaysia.

+6 (03) 7491 8622

+6 (03) 5635 8630

info@sunway.edu.my

SUNWAY UNIVERSITY

Programmes offered

DIPLOMA & DEGREE PROGRAMMES

- Diploma in Business Administration
- Diploma in Culinary Arts
- Diploma in Events Management
- Diploma in Fine Art
- Diploma in Graphic & Multimedia Design
- Diploma in Hotel Management
- Diploma in Information Technology
- Diploma in Interior Design
- Diploma in Performing Arts
- Diploma in Tourism Management
- BSc (Hons) Accounting & Finance
- BSc (Hons) Business Management
- BSc (Hons) Business Studies
- BA (Hons) in Communication
- BSc (Hons) in Computer Science
- BSc (Hons) Information Systems
- BSc (Hons) Information Technology
- BSc (Hons) in International Hospitality Management
- BSc (Hons) Psychology

AMERICAN DEGREE TRANSFER PROGRAM (ARTS)

AMERICAN DEGREE TRANSFER PROGRAM (SCIENCE/ENGINEERING)

(Majors in Actuarial Science, Architecture, Aviation, Biomedical Science, Business, Communication, Computer Science, Engineering, Forensic Science, Psychology)

POSTGRADUATE PROGRAMMES

- Doctor of Philosophy (Computing)
- MSc in Computer Science (by research)
- MSc in Psychology (Organisational)

ENGLISH LANGUAGE PROGRAMMES

- Intensive English Programme (IEP)
- International English Language Testing Systems (IELTS)
- Vacation English School (VES)

SUNWAY COLLEGE

Programmes offered

PRE-UNIVERSITY STUDIES

- Australian Matriculation
- Cambridge GCE A Level
- Canadian International Matriculation Programme
- Monash University Foundation Year
- Sunway Foundation in Arts

AUSTRALIAN BUSINESS PROGRAMMES

(Victoria University, Melbourne, Australia)

- Bachelor of Business (Twinning Programme/3+0)
(Accounting, Banking & Finance, Financial Risk Management, International Trade and Marketing)
- Master of Business Administration (MBA)

PROFESSIONAL ACCOUNTING PROGRAMMES

- Association of Chartered Certified Accountants (ACCA)
- Certified Accounting Technician (CAT)
- Certificate in Finance, Accounting & Business (CFAB)
- The Institute of Chartered Accountants in England & Wales (ICAEW)